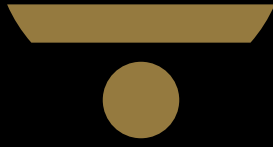


TRIBE⁷



BLACKNING⁷

PRIME LENS RANGE

SPECS · TIMING · PRICING · CREDITS



THIS ADVANCE INFORMATION IS SUBJECT TO CHANGE

O U T L I N E

Purpose-designed for large format motion picture imaging, BLACKWING⁷ lenses from TRIBE⁷ represent an entirely new range of tuned optics for contemporary film makers to use within their creative story telling.

BLACKWING⁷ optics exhibit unique imaging properties which arise from the introduction of controlled distortion during the development and manufacturing processes. This distortion is modular and allows a level of tuneability over key parameters which shape many creative characteristics of the lenses.

The lens range comprises a core set of 8 focal lengths, with three additional planned focal lengths. All lenses are offered in three tuning options per focal length, configurable at point of manufacture.

BLACKWING⁷ lens tuning allows parameters such as sharpness, contrast, roll-off, spherical aberration, field curvature, edge halation and flare to be modified to provide sets of “curated” optics to suit the personality and intent of the owner.

Many of the design cues for BLACKWING⁷ primes originate in optics manufactured during the 1930 - 1960s, but the real inspiration behind the lenses lies in the evolutionary nature of experimental music and audio synthesis, and the process of creating distortion through sound amplification.

Conceptually, the ability to tune each BLACKWING⁷ lens is identical to how EQ adjustment is used in music production - to control the range, or shape of tonality in specific bands across the audio frequency spectrum. The image produced by a BLACKWING⁷ lens can be described as having a musical fidelity to it; with each focal length having an underlying level of distortion which can be controlled to produce strong artistic resonances including unique flaring characteristics.

Ten sets of BLACKWING⁷ BINARIES were created by TRIBE⁷ to help introduce the film making community to the concept of audio merging into imaging. These limited-edition BINARIES are named in recognition of creative imaging not being a black or white process – film makers accessing a wide choice of optics is essential to serve creative storytelling. BLACKWING⁷ BINARIES have been widely used on commercials, music videos, TV and feature productions and all feedback from these unique lenses has contributed to the production tuning of the BLACKWING⁷ prime lenses which are now shipping.



TECHNICAL SPECIFICATION

FOCAL LENGTH	IMAGE CIRCLE MM MAX ILLUMINATION	CLOSE FOCUS		WEIGHT	
		IN	CM	LB	KG
20.7	50	<9.0	<23.0	3.2	1.45
27	55	13.0	34.0	3.6	1.7
37	60	18.0	45.7	3.4	1.6
47	60	17.5	44.5	3.2	1.5
57	60	19.0	48.3	3.5	1.6
77	60	26.0	66.0	3.0	1.4
107	62	27.0	68.5	3.2	1.4
137	62	32.0	81.3	3.2	1.5

BLACKWING⁷ TECHNICAL SPECIFICATIONS

APERTURE	—	T1.8 TO T22 FOR 77 & 107MM T1.9 TO T22 FOR ALL OTHER FOCAL LENGTHS
IRIS SYSTEM	—	NON-LINEAR, 14 BLADE
IMAGE DISTORTION	—	LESS THAN -4% / +0.5%
TRANSMISSION WAVEBAND	—	420NM TO 680NM
COLOR AND TONALITY	—	MATCHED ACROSS THE RANGE
MAGNIFICATION SHIFT	—	LESS THAN 4% (FROM ∞ TO CLOSE FOCUS)
FOCUS AND IRIS BACKLASH	—	NEGLIGIBLE
FLANGE SYSTEM	—	PL MOUNT
FOCUS SCALE AND DRIVE		WINDOWED
	27 TO 137MM	LEFT/RIGHT IN FEET (METERS ON REQUEST)
	20.7MM	LEFT SIDE ONLY IN FEET (METERS ON REQUEST)
		270-DEGREE ROTATION
		GEARING: 142 TEETH, 0.8MM MOD, 6MM WIDTH,
APERTURE SCALE AND DRIVE	—	115.2MM DIA NON-WINDOWED LEFT/RIGHT 90-DEGREE ROTATION GEARING: 134 TEETH, 0.8MM MOD, 3MM WIDTH,
OPERATING TEMPERATURE RANGE	—	108.8MM DIA -20 TO +45 C

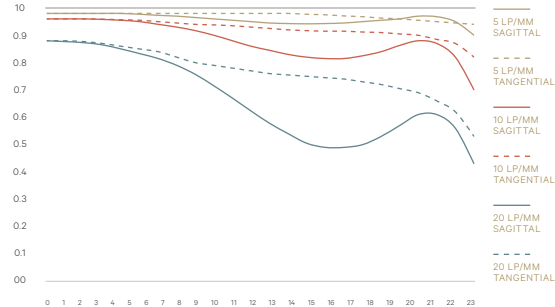


TUNING

Every BLACKWING⁷ lens is hand-built, using a proprietary production tuning process which allows the optical performance of each lens in the range to be uniquely configured and tuned to their owner's wishes and creative style. Three pre-set tonalities are available to order:

S STRAIGHT

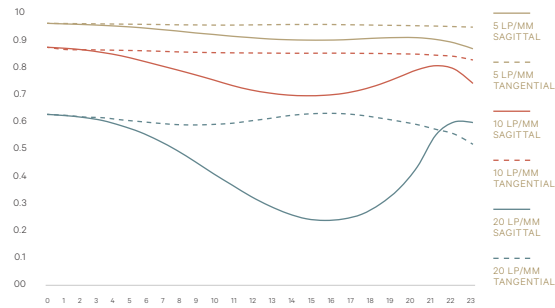
S-tune BLACKWING⁷ primes have a tuning profile based on optical designs from the first half of the 20TH Century, such as the 1950 Wray UNILITE 50MM f/2. S lenses have optical elements with multi-layer coatings to help control the resonant flare characteristics seen in the T and X variant BLACKWING⁷ primes. The more advanced optical coating also allows a modest increase in central image sharpness whilst maintaining a smooth roll-off of contrast across the frame.



77MM T1.9 S-TUNED

T TRANSIENT

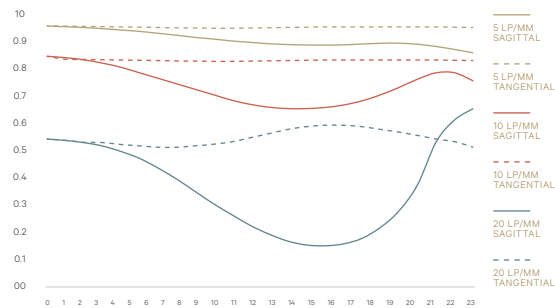
T-tune BLACKWING⁷ primes are very much the workhorse lenses in the BLACKWING⁷ range. They have a tuning profile which further exaggerates contrast roll-off to the edge of the frame and provides increased edge halation. T lenses have a unique personality and are designed to render a slightly softer, more artistic image, with a higher degree of light reactivity and more vibrant flaring characteristic due to the use of vintage-style single-coated optics.



77MM T1.9 T-TUNED

X EXPRESSIVE

X-tune BLACKWING⁷ primes are the lowest contrast variant of the BLACKWING⁷ lens range. Further exaggerated edge halation, with a minor degree of spherical aberration and focal plane curvature increases the perception of a shallower depth of field. X-tuned optics have selective edge-uncoating to reduce contrast under hard lighting conditions. They are designed for film makers who light minimally and favour lenses which can create smooth, almost ethereal images.



77MM T1.9 X-TUNED

BLACKWING⁷ TECHNICAL SPECIFICATIONS





AVAILABILITY AND PRICING

AVAILABILITY

BLACKWING⁷ lenses are available worldwide through direct enquiry from TRIBE⁷ or distributors below.

All orders will be fulfilled on a first-come, first-served basis. Focal length and tuning requirements will be discussed with clients to build a personalised quotation on which an order can be based. If required, tuning choice can be changed up to 8 weeks prior to delivery. Leadtime from time of order to the first shipment is typically 12 months, lead times may vary by distributor.

DISTRIBUTION

In the below regions, BLACKWING⁷ lenses are exclusively available from our distributors:

- CVP United Kingdom aaron.george@cvp.com
- Second Reef Europe, Australia & New Zealand sales@second-reef.com
- AbelCine North America tribe7@abelcine.com

PRICING

BLACKWING ⁷ LENS	US DOLLAR		EURO	
	S T X	CUSTOM	S T X	CUSTOM
20.7MM T1.9	15,500	16,143	13,805	14,378
23.7MM T1.9	15,500	16,143	13,805	14,378
27MM T1.9	13,877	14,406	12,875	13,366
37MM T1.9	11,700	12,170	10,755	11,208
47MM T1.9	11,700	12,170	10,755	11,208
57MM T1.9	11,700	12,170	10,755	11,208
77MM T1.9	11,700	12,170	10,755	11,208
107MM T1.9	12,470	12,944	11,535	11,973
137MM T1.9	12,770	13,270	11,835	12,298
SET OF 9 LENSES	116,917	121,586	106,875	111,225

A 10% deposit is payable with order and is required to secure early availability. Pricing is FOB factory (Bavaria, Germany) and excludes delivery charges and all taxes.

Bespoke lens tuning and personalisation services are available on request and will be priced accordingly. Prices for a full set of 9 bespoke tuned lenses start at \$121,586 USD and €111,224 EUR. Additional specialized focal lengths – including wide angle and macro variants - will be researched and developed during 2022 and available to ship during late 2022.

*USD pricing is subject to exchange rate fluctuation.



THIS ADVANCE INFORMATION IS SUBJECT TO CHANGE

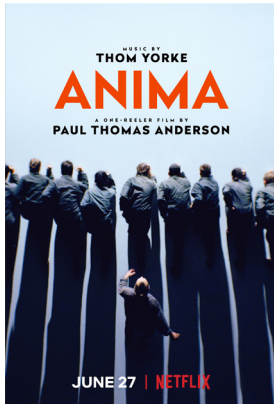
TRIBE7

BLACKNING7

EARLY PRODUCTION CREDITS

FILM & TV

BLACKNING7 TECHNICAL SPECIFICATIONS



THOM YORKE: ANIMA (2019)
DIR: PAUL THOMAS ANDERSON
DP: DARIUS KHONDJI ASC, AFC
TUNING: X-VARIANT



KEPLER 138 (2019)
DIR: JACOB SCHWARZ
DP: PETER MOSIMAN
TUNING: T-VARIANT



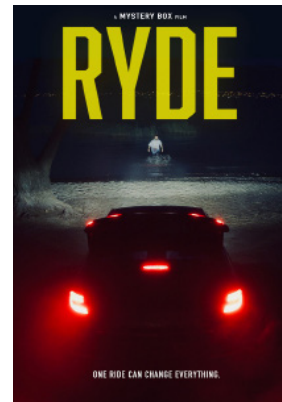
THE HIGH NOTE (2020)
DIR: NISHA GANATRA
DP: JASON MCCORMICK
TUNING: T-VARIANT



WAKEUP (2020)
DIR: OLIVIA WILDE
DP: MATTY LIBATIQUE
TUNING: X-VARIANT



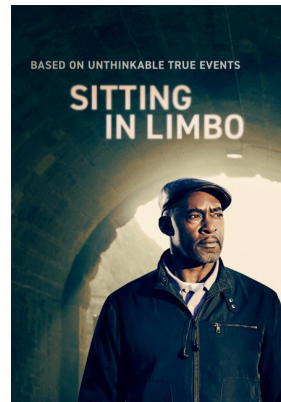
THE PROM (2020)
DIR: RYAN MURPHY
DP: MATTY LIBATIQUE, ASC
TUNING: X-VARIANT



RYDE (2020)
DIR: JACOB SCHWARZ
DP: BENNETT DUCHIN
TUNING: T-VARIANT



UNPREGNANT (2020)
DIR: RACHEL LEE GOLDENBERG
DP: DOUG EMMETT
TUNING: T-VARIANT



SITTING IN LIMBO (2020)
DIR: STELLA CORRADI
DP: RINA YANG
TUNING: T-VARIANT

IN PRODUCTION

DON'T WORRY DARLING
DIR: OLIVIA WILDE
DP: MATTY LIBATIQUE, ASC

LISEY'S STORY
DIR: PABLO LARRAÍN
DP: DARIUS KHONDJI

DMZ
DIR: AVA DUVERNAY
DP: MATTHEW J. LLOYD

ON THE VERGE
DIR: JULIE DELPY
DP: DOUG EMMETT

SCENES FROM A MARRIAGE
DIR: HAGAI LEVI
DP: ANDRIJ PAREKH

STAR WARS: OBI WAN
DIR: DEBORAH CHOW
DP: CHUNG-HOON CHUNG

ARCHIVE 81
DIR: REBECCA THOMAS & JAMES WAN
DP: BOBBYBUKOWSKI

STATION ELEVEN
DIR: HIRO MURAI
DP: STEVE COSENS & DANIEL GRANT

CARMEN
DIR: BENJAMIN MILLEPIED
DP: JÖRG WIDMER

LIMBO
DIR: ALEJANDRO G. INÁRRITU
DP: DARIUS KHONDJI



THIS ADVANCE INFORMATION IS SUBJECT TO CHANGE

TRIBE⁷

BLACKNING⁷

EARLY PRODUCTION CREDITS

COMMERCIAL



SEPHORA
DP: RINA YANG
TUNING: X-VARIANT



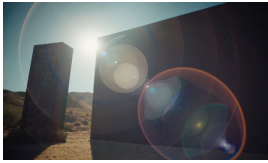
GATORADE
DP: RINA YANG
TUNING: X-VARIANT



DIESEL: FRANCESCA
DP: MATIAS BOUCARD
TUNING: T & X-VARIANT



NIKE: CARRY ME
DP: JANUSZ KAMINSKI
TUNING: X-VARIANT



PS5: UNBOXING REIMAGINED
DP: COREY C. WATERS
TUNING: T-TUNED WITH X FLARE



JOSE CUERVO
DP: RODRIGO PRIETO AMC, ASC
TUNING: T & X-VARIANT



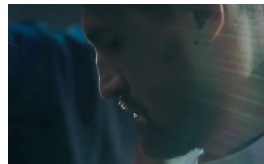
SANDY HOOK PROMISE
DP: AUTUMN DURALD
TUNING: T-VARIANT



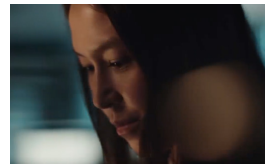
EVA AIR: GATEWAY TO ASIA
DP: JEREMY ROUSE
TUNING: T & X-VARIANT



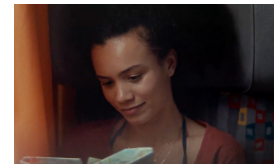
FITBIT VERSA 2
DP: JESS HALL BSC, ASC
TUNING: T-VARIANT



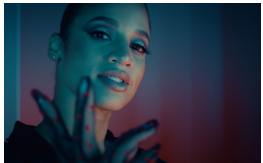
40 DAYS: CANELO V KOVALEV
DP: BRIAN HENDERSON
TUNING: T-VARIANT



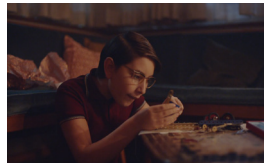
HP: LIGHTER THAN AIR
DP: BEN SERESIN
TUNING: T-VARIANT



AMEX: POINTS ARE WORTH MORE DP: MÉLODIE PREEL
TUNING: T-VARIANT



NETFLIX: EMMY PARTY 2019
DP: BRIAN HENDERSON
TUNING: T-VARIANT



CARREFOUR: 60 NOËLS DÉJA
DP: MATIAS BOUCARD
TUNING: T-VARIANT



ROGER VIVER: I WOOF YOU
DP: MÉLODIE PREEL
TUNING: T-VARIANT



ADIDAS X IVY PARK
DP: ARNAU VALLS COLOMER
TUNING: T-VARIANT



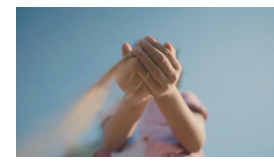
GO: LASHANA LYNCH
DP: OLLAN COLLARDY
TUNING: T-VARIANT



DISNEY: TOMORROW IS A DREAM
AWAY DP: KARINA SILVA
TUNING: T-VARIANT



BANQUE POPULAIRE
DP: MELODIE PREEL
TUNING: T-VARIANT



HILTON: NEW MEMORIES
DP: SYLVESTRE DEDISE
TUNING: T-VARIANT

BLACKNING⁷ TECHNICAL SPECIFICATIONS



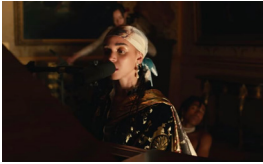
THIS ADVANCE INFORMATION IS SUBJECT TO CHANGE

TRIBE⁷

BLACKNING⁷

EARLY PRODUCTION CREDITS

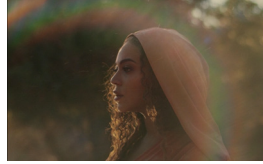
MUSIC VIDEO



FKA TWIGS: CELLOPHANE LIVE
DP: RINA YANG
TUNING: X-VARIANT



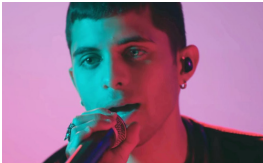
THEO CROKER: UNDERSTAND YOURSELF DP: ALAN TORRES
TUNING: X-VARIANT



BEYONCÉ: BLACK IS KING
DP: SANTIAGO GONZALEZ III
TUNING: X-VARIANT



DOJA CAT: STREETS
DP: DAVID OKOLO
TUNING: X-VARIANT



CNCO: PRETEND LIVE
DP: DAVID MYRICK
TUNING: T-VARIANT



CNCO: DE CERO LIVE
DP: DAVID MYRICK
TUNING: T-VARIANT



LOS ÁNGELES LINDO Y QUERIDO
DP: SANTIAGO GONZALEZ III
TUNING: T-VARIANT



PNAU FEAT. OLLIE GABRIEL
DP: DAVID MYRICK
TUNING: X-VARIANT



THE KID LAROI: SELFISH
DP: LOGAN MEIS
TUNING: T-VARIANT



D-SMOKE: RAPTURE
DP: JONATHAN CHOU
TUNING: T-VARIANT



JUJU: VERTRAU MIR
DP: SIMON VU
TUNING: T-VARIANT



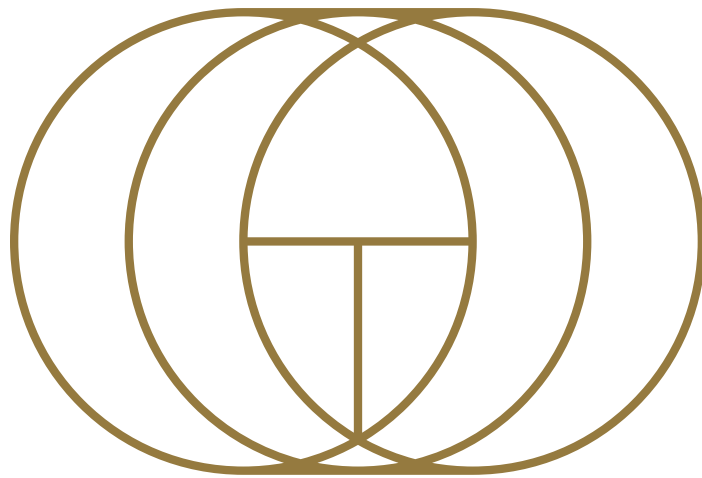
MENOR BRONX: HATER
DP: MARCO ANDRE
TUNING: T-VARIANT

BLACKNING⁷ TECHNICAL SPECIFICATIONS



THIS ADVANCE INFORMATION IS SUBJECT TO CHANGE

A



TRIBE⁷

MISSION