

4K HDR 17"/24" Monitors OBM-U170 / U240

4K HDR

17", 24" 4K LCD Professional Monitor with 12G-SDI Single Link, Quad Link 4K



The OBM-U240 and OBM-U170 incorporate 12G-SDI input and loopout(x2), 3G/HD-SDI input and loopout(x2), HDMI 2.0 input, and SFP optical connector. The OBM-U240 and OBM-U170 accept up to 3840x2160/24,25,30,50,60p and 4096x2160/24.25.30,50,60p signals. These new monitors support a wide color gamut conforming to DCI-P3 and most of the ITU-R BT.2020 standard. The OBM-U240 and OBM-U170 offer the professional performance, including excellent quality black performance, accurate color reproduction, which make these monitors ideal for 4K live production, versatile monitoring and field production applications. In addition, the OBM-U240 and OBM-U170 support the integrated 3D LUT, Waveform, Vector Scope, Color Space & Gamma Comparison, and a full feature set.



Postium Korea Co., Ltd.

www.postium.com / www.postium.co.kr

Versatile 4K/QFHD Input Capability

The OBM-U170 and OBM-U240 are equipped with standard 12G-SDI input interface(x2) , 3G/HD-SDI input interface(x2) and support 4K Quad Link 2-Sample Interleave signals and 4K Quad Link Square Division signals.

The OBM-U170 and OBM-U240 can accept up to 3840x2160/24,25,30,50,60p and 4096x2160/24.25.30,50,60p signals.

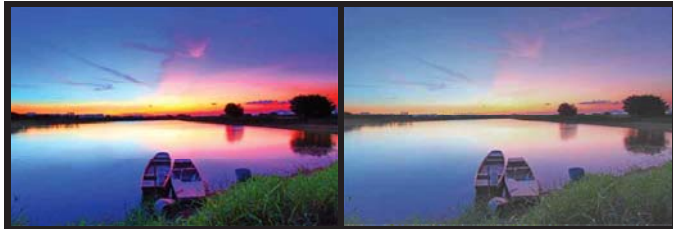


High Dynamic Range(HDR) display function

The OBM-U240 provides the function to display the High Dynamic Range footage. Postium HDR function allows users to view both highlights and shadow detail of scenes at the same time, thus resulting in more natural and realistic images. The OBM-U240 supports PQ EOTF (SMPTE ST 2084) and Hybrid Log Gamma OETF mode.

HDR Mode

SDR Mode



OBM-HDR provides the function of comparing HDR and SDR(Standard Dynamic Range) on the displayed image on OBM-U240 simultaneously.



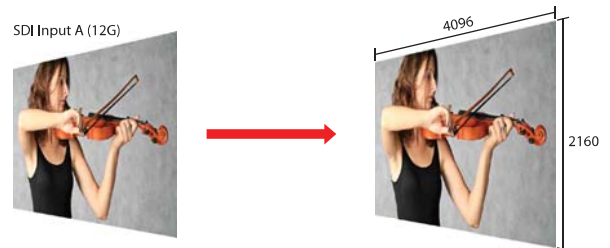
4K Waveform Monitor and Vector Scope Display

These features enable users to monitor sources using the internal Waveform and Vector Scope. Waveform Wide mode is supported, and both Waveform and Vector Scope can be displayed simultaneously.



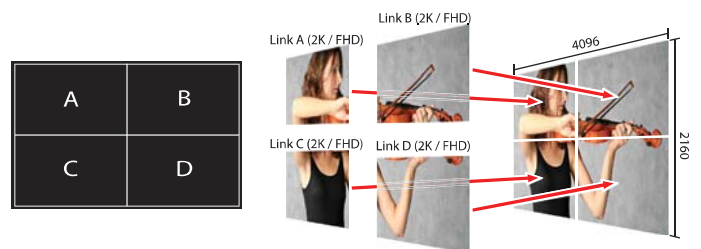
Various 4K/12G Display Modes

Mode 1 : Single Link 12G



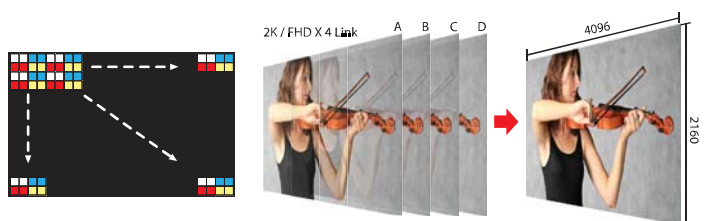
Mode 2 : Quad Link Square Division

Each link contains one square of the original image.



Mode 3 : Quad Link 2 Sample Interleave (2SI)

Each link contains a full image at 1/4 resolution. 2SI mode uses four Sub-image and alternates the samples every two pixels and every line instead of slitting the image into four quadrants.



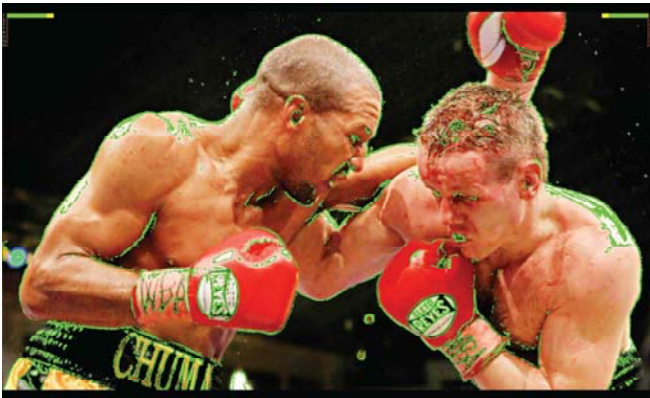
Adjustable Gamma

Gamma value is adjustable from 1.0 to 3.0 as user's preference to monitor in the dark area of the picture. Any pictures taken in either light or dark environment can be easily watched or analyzed.



Focus Assist

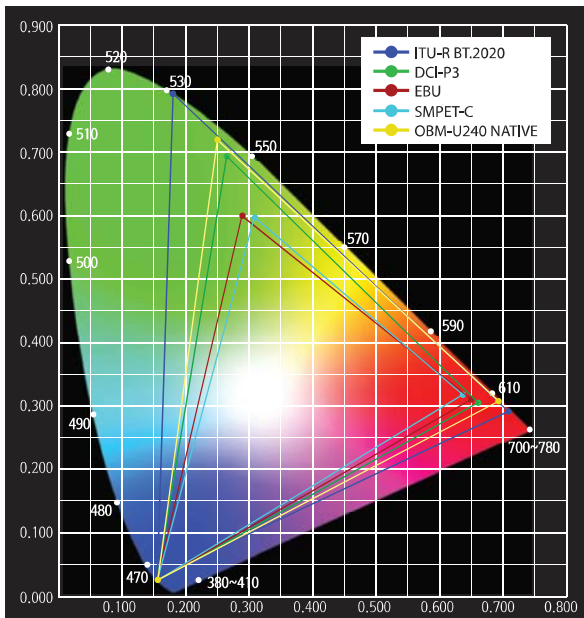
This function controls the aperture level of a video signal, and displays images on screen with sharpened edges to help camera focus operation.



Supports DCI P3 and ITU-R BT.2020 Wide Color Spaces

The wide color gamut and the advanced 3D LUT function enable OBM-U240 and OBM-U170 to reproduce various color spaces accurately and the excellent grayscale.

You can select from color gamuts such as DCI-P3, ITU-R BT.2020, ITU-R BT.709, SMPTE-C, EBU, Native.



Color Space & Gamma Comparison (Side by Side, Wipe position)

This unique function allows users to compare the two difference color spaces and gammas side by side simultaneously.

The area of the two pictures to be displayed can be selected using a vertical WIPE pattern.



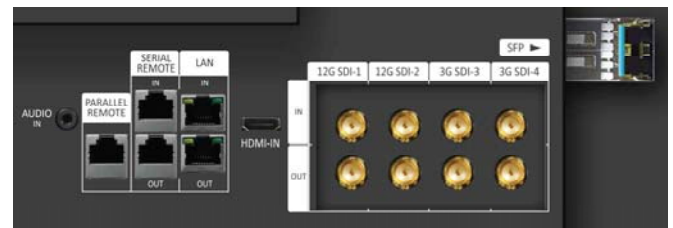
Zebra

This function displays the Luma(Y') level of the input image in zebra pattern.



SFP optical connector

The OBM-U240 and OBM-U170 have the SFP interface, which allows to use the various SFP modules which can fit any possible broadcast applications.



Various Markers

The OBM-U240 and OBM-U170 can display various markers, including aspect marker, area marker, and center marker. In addition, the detailed display settings of each marker are allowed. For example, the color, brightness, horizontal/vertical position, and thickness of aspect markers can all be adjusted.

4K HDR 17"/24" Monitors OBM-U170 / U240

Product Highlights

- Supporting 12G/6G-SDI(4K) 2 Channel, 3G/HD-SDI (Level A/B) 2 Channel
- Quad Link Square Division
- Quad Link 2 Sample Interleave (2SI)
- High Dynamic Range(HDR) display function
- 3D-LUT for Accurate Color Reproduction (ITU-R BT.709, SMPTE-C, EBU, Native, D-CINEMA, ITU-R BT.2020)
- Gamma Selection (1.0 ~ 3.0)
- Color Temperature(3200K, 5500K, 6500K, 9300K, USER 1/2/3, D-CINEMA)
- Support 4096x2160 Aspect
- Compare Color Space & Gamma (Side by side, Wipe position)
- Monitor Update/Control via Ethernet, USB / RS-422
- Focus Assist
- Zebra
- Waveform, VectorScope (Wave + Vector, Waveform Wide)
- Exposure Range Check
- Camera Log Conversion
- Firmware Update via USB Flash Memory
- Various Markers (EBU, 4:3, 16:9, 1.85:1, 2.35:1, Variable etc.)
- Zero Scan / Over Scan / 1:1 Scan
- H/V Delay
- Blue/Mono
- Time Code Display
- De-embedded 8~16ch Audio Level Meter
- Remote Control via GPI(RJ-45) Port
- White Internal Patterns Display for Color Test
- 3 Color TALLY Lamp
- Rack & VESA Mount (Option)
- SFP optical connector

Specifications

*These features are subject to change without prior notice

ITEM		OBM-U170	OBM-U240
Input	4 x BNC	12G-SDI-1/2, 3G/HD-SDI-3/4	
	1 x HDMI	HDMI 2.0	
	1 x SFP	Optical	
Output	4 x BNC	12G-SDI-1/2, 3G/HD-SDI-3/4 Active Loop Output	
Input Signal Format	SMPTE ST 2082M	2160p(60/59.94/50/30/29.97/25/24)	
	SMPTE ST 2081M	2160p(30/29.97/25/24)	
	SMPTE 425M AB	1080p(60/59.94/50/30/29.97/25/24/23.98/30sF 29.97sF/25sF/24sF/23.98sF) / 1080i (60/59.94/50)	
	SMPTE 274M/292M	1080i (60/59.94/50)	
		1080p(30/29.97/25/24/24sF/23.98/23.98sF)	
	SMPTE 296M	720p(60/59.94/50)	
	SMPTE 260M	1035i(60/59.94)	
	SMPTE 125M/259M	480i(60/59.94), 576i(50)	
	2K, SMPTE 428M	2048 x 1080p(24/24sF/23.98/23.98sF)	
	ITU R-BT.656	576i(50)	
	HDMI 2.0	~ 2160p(60)	
SFP	12Gbps, 6Gbps, 2.970Gbps, 1.485Gbps, 270Mbps		
Audio In/Out	1 x Phone Jack In	Line In(Stereo)	
	1 x Phone Jack Out	H/P Out(Front, Stereo)	
	2 x Speaker Out	Stereo	
LCD	Size	17.3"	23.8"
	Resolution	1920 x 1080 (16:9)	3840 x 2160 (16:9)
	Pixel Pitch	0.199mm	0.137mm
	Color	10 bit, 1.073G colors	10 bit, 1.073G colors
	Viewing Angle	178(H), 178(V)	178(H), 178(V)
	Luminance of White	350d/m ²	350d/m ²
	Contrast	1000 : 1	1000 : 1
	Display Area (H x V)	381.9 x 214.8 (mm)	527 x 296 (mm)
General	1 x Ethernet	Control/Update, GPI-7 Port, RJ-45P Jack	
	1 x GPIO	GPI-7 Port, RJ-45P Jack	
	2 x Serial	RS-422, RJ-11P Jack	
	1 x USB	For firmware update , Color Calibration	
	Power Requirements	AC(100-230V, 50/60Hz) / DC 12V	AC(100-230V, 50/60Hz) / DC 24V
	Power Consumption	40W	100W
	Operating Temperature	0°C ~ 40°C(32°F~104°F)	
	Operating Humidity	20% ~ 80% RH	
	Weight	6.5kg / 14.33lbs	10.5kg / 23.14lbs
	Dimension(WxHxD)	412 x 325 x 84.5mm (with stand)	570 x 402 x 85mm (with stand)
	Accessories	Power Cable	
	Option	Rack Mount Kit / Carrying Case / V-Mount / Acrylic Protector / Sun Hood(17" only)	

* Specifications are subject to change without prior notice for the product quality improvement.



Postium Korea Co., Ltd.

208, Building A, Samsung Techno Valley, 140, Tongil-ro, Deogyang-gu, Goyang-si, Gyeonggi-do, Korea, 10594

Tel : +82.2.354.6055 / Fax : +82.2.354.6056 / E-mail : sales@postium.com / www.postium.com