

DvTec - EngRig

Thank you for choosing the EngRig.

The EngRig is designed to support full size shoulder video cameras equipped with standard 15mm Matte Box support rods.

Caution ! Read this first !

The support pole is spring loaded ! Handle it with care.
To avoid possible physical or property damage to your body or the camera Lens,
Make sure **BOTH** support pole locking knobs are **LOCKED**. When inserting or
taking out the pole to and from the support assembly.

Preparation

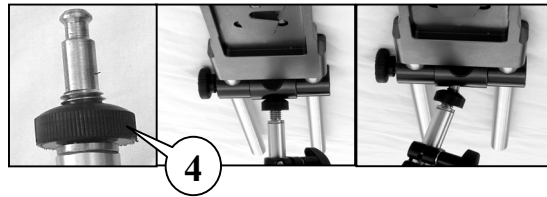
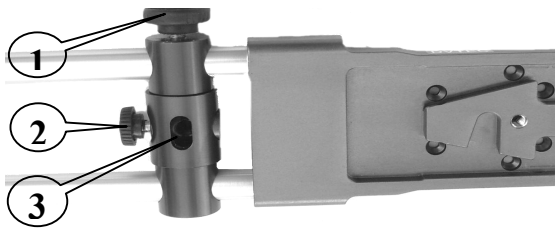
- Insert the rods into the Support Assembly and lock (1) in the middle of the rods.
- Lock the support pole in its mid. length.
- Attach the holster to the support belt.
- Put on the support belt.
- Tighten the belt to your waist above your hip bone.
- Position the holster aligned with the right shoulder.

Basic operation

- Put the camera on your shoulder in normal shooting position.

Proceed with your right hand holding the camera zoom grip at all times !

- Place the bottom of the pole in the holster and the brass tip into hole (3).
- Make sure the brass tip is inserted all the way in hole (3) and lock with knob (2).
- Unlock the pole locking knobs.
- Adjust the black nut (4), Clockwise for free mode and Counter clockwise for Horizontal lock mode.



Advanced operation

- Move the support point along the rods to match your camera weight, the desired overall springiness, and spring resistance.
- To adjust the pole length, Lift the camera to above straight position and lock one of the pole locks to best support the camera in a straight position.
- The top spring is softer the bottom spring. Choose the one that is best for your camera weight and type of shooting, lock the other.
- Release both pole locks for extreme down and up tilting.
- For most stable longer period shoots, or tele shoots, Tighten nut (4) and both pole locks.

For more information visit: www.dvtec.tv or mail us to : info@dvtec.tv